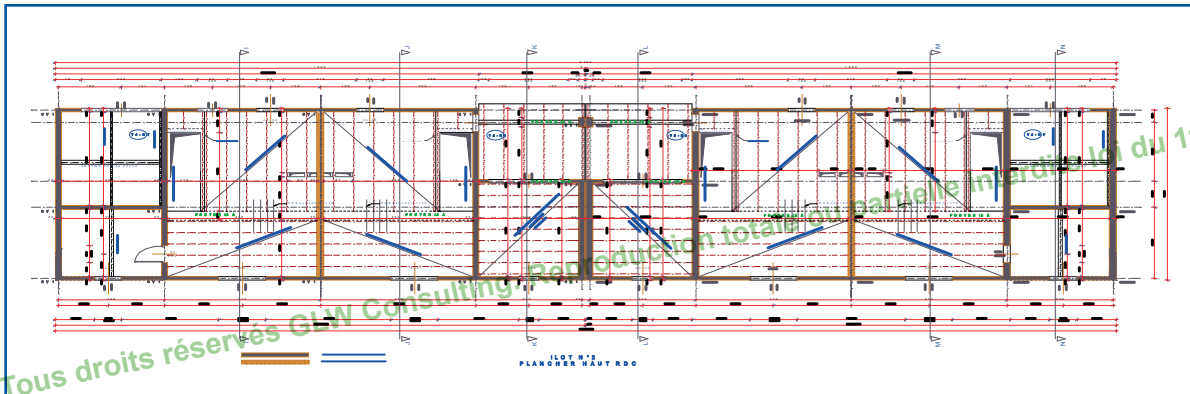


LOGEMENTS & RÉHABILITATIONS

OPÉRATIONS DU LOGIS FAMILIAL VAROIS

- Village REYNIER SIX FOURS LES PLAGES
- Communes de la CADIÈRE D'AZUR, VINS, CORRENS, BRIGNOLES, etc.



OPÉRATIONS DE RÉHABILITATION LE LOGIS FAMILIAL VAROIS (PLUS DE 250 LOGEMENTS)

- Commune de CARCÉS, BESSE SUR ISSOLE, LE VAL, BRIGNOLES, NÉOULES, LA ROQUEBRUSSANNE, SIX FOURS, SANARY,...

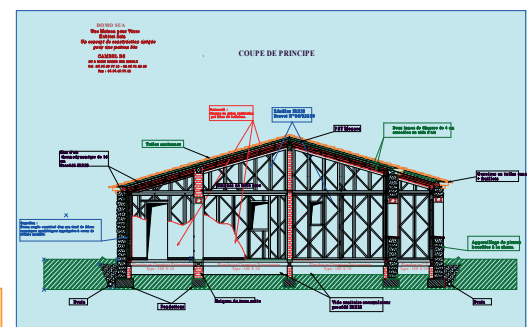
HABITAT SAIN

TERRE CUITE ET CRUE, PIERRES

- Construction en briques de terre crue ou cuite, briques de terre
- Matériaux naturels : Fermacell, Canosmose, Béton de canobiote



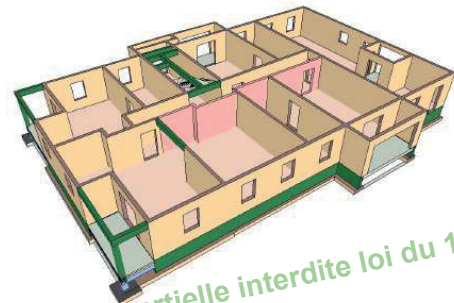
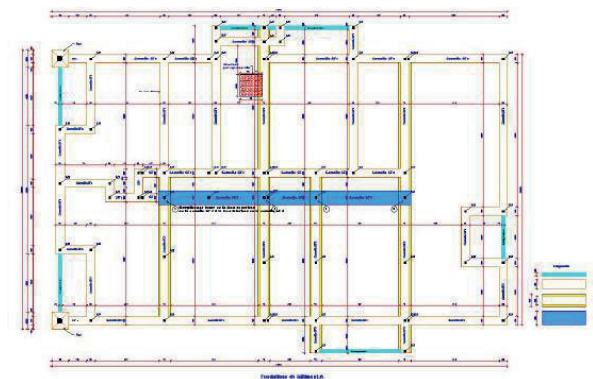
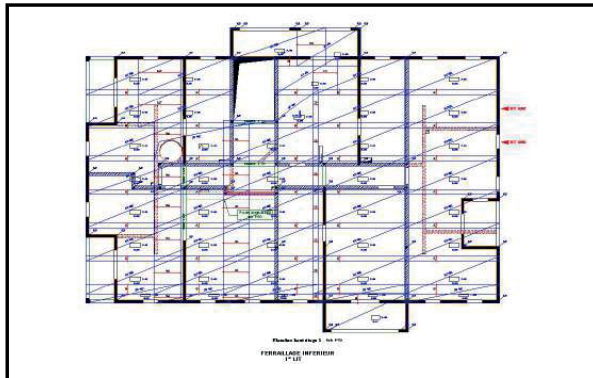
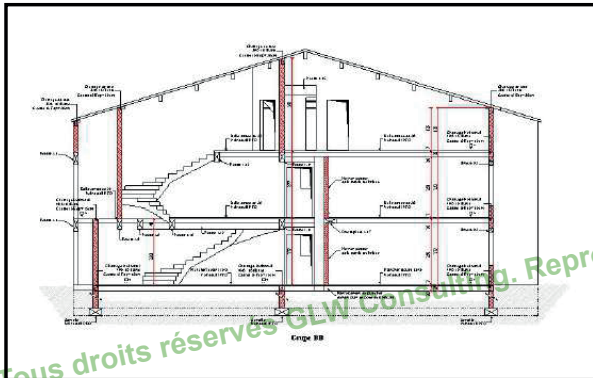
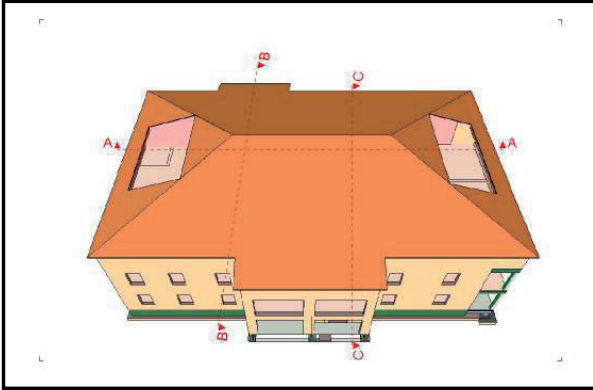
Presse à brique



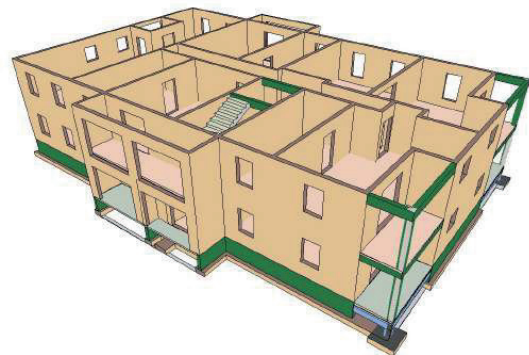
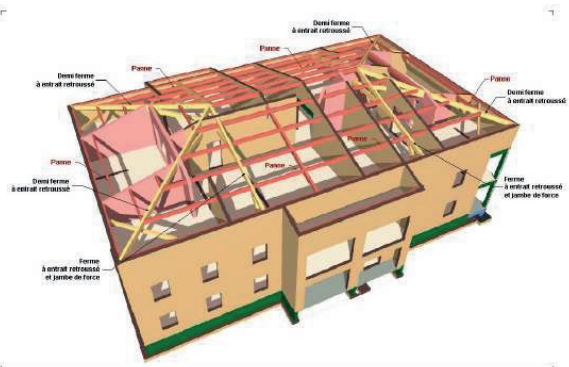
Coopération
Décentralisée avec 5 Villages du Sahel
dans La Région de SANCE BURKINA FASO

LOGEMENTS & RÉHABILITATIONS (SUITE)

EIFFAGE IMMOBILIER - CONSTRUCTION DE 72 LOGEMENTS - LES BASTIDES DU BEAUSSET - (C..O. : 6 870 000 €)

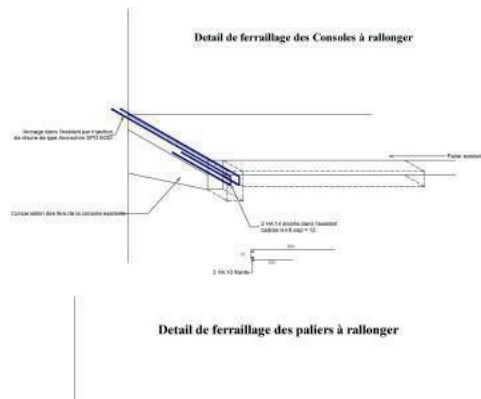
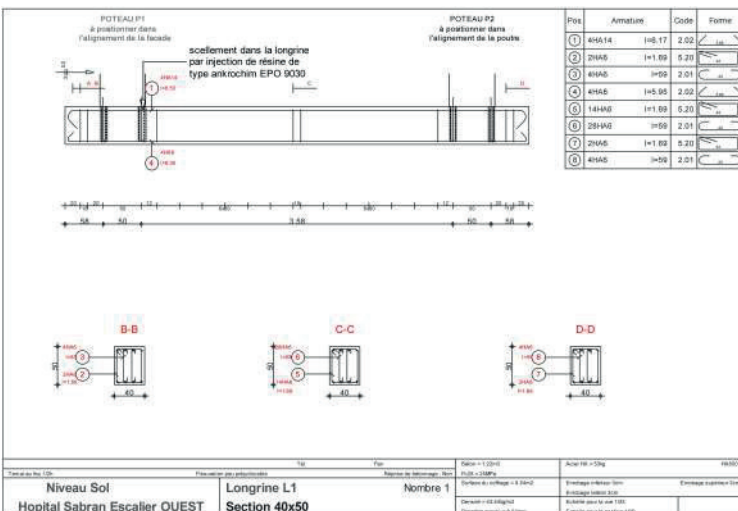
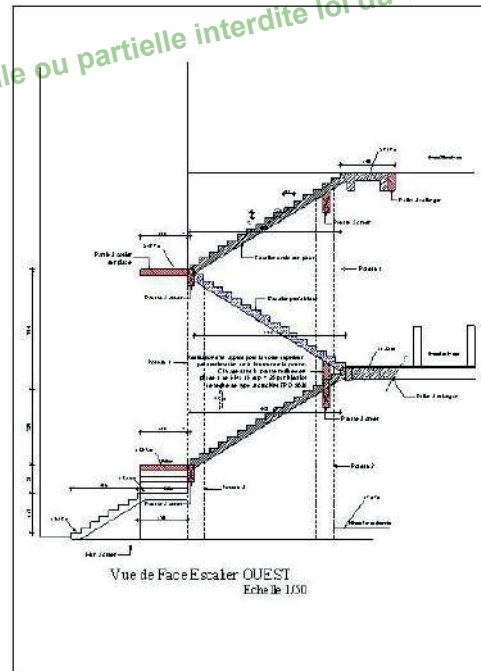
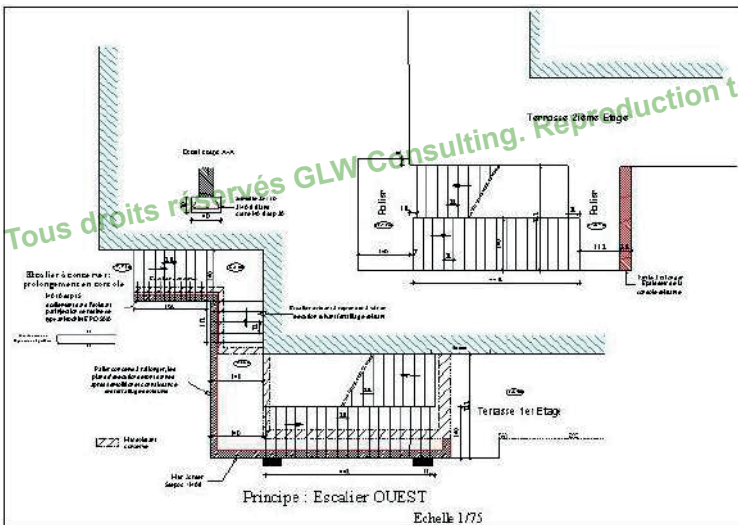


Tous droits réservés GLW Consulting. Reproduction totale ou partielle interdite loi du 11 mars 1957.



LOGEMENTS & RÉHABILITATIONS (SUITE)

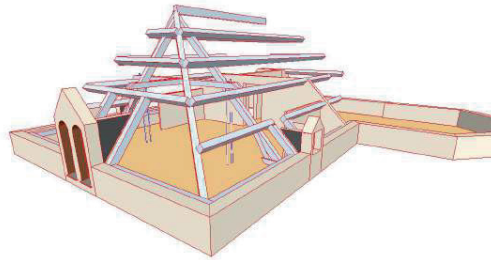
MISE EN CONFORMITÉ DE L'HÔPITAL RENÉ SABRAN



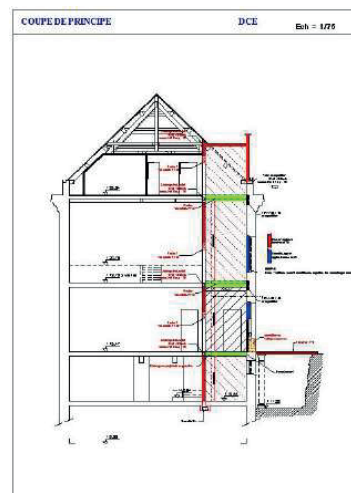
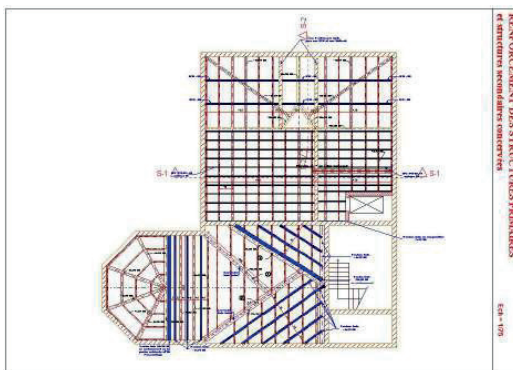
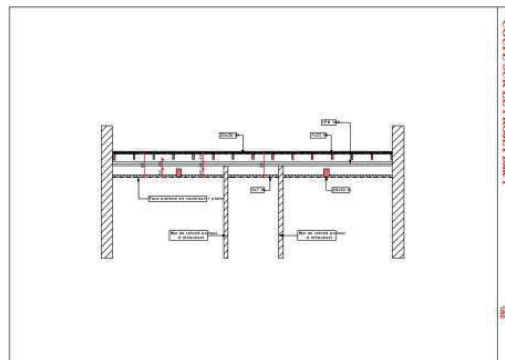
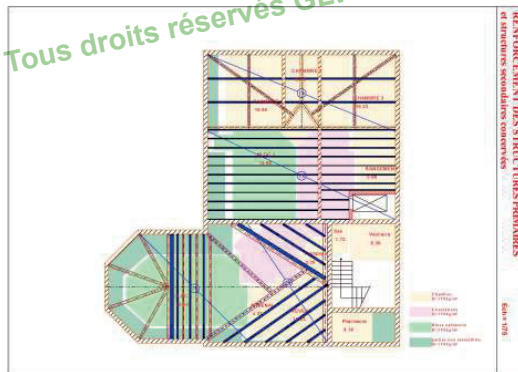
Niveau Sol	Longrine L1	Nombre 1	Section 40x50
Hopital Sabran Escalier OUEST			

LOGEMENTS & RÉHABILITATIONS (SUITE)

CRÉATION DE BLOCS OPÉRATOIRES ET SALLES DE REPOS CLINIQUE CHÂTEAU BERGER À MARSEILLE 950 M²

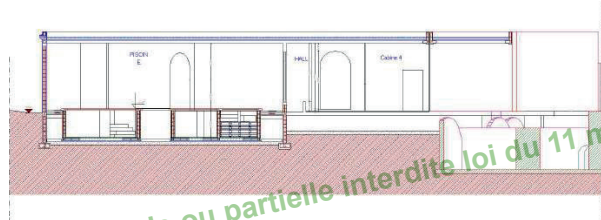
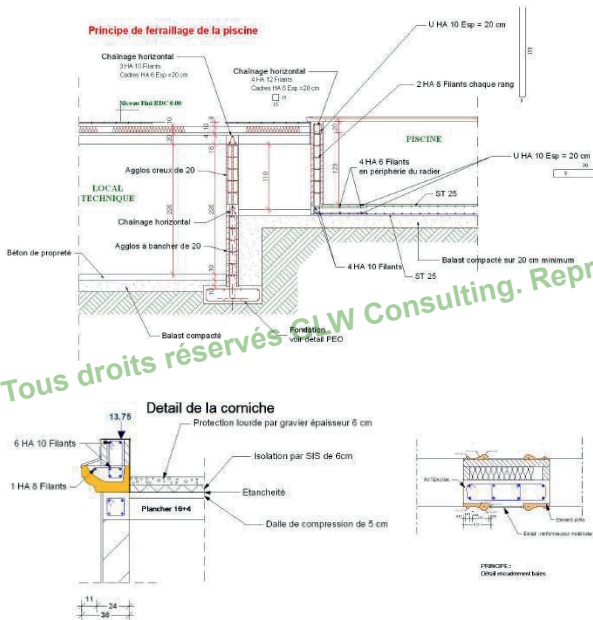
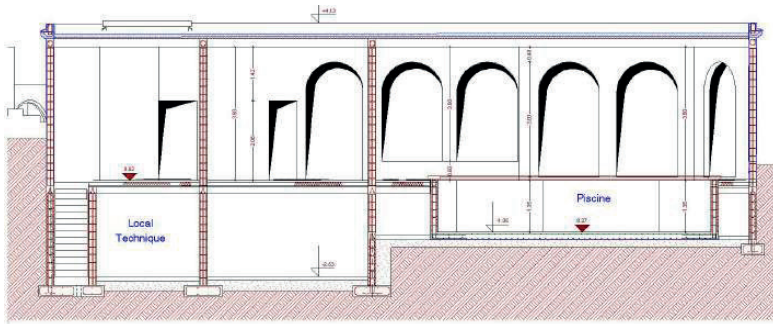


Reproduction totale ou partielle interdite loi du 11 mars 1957.

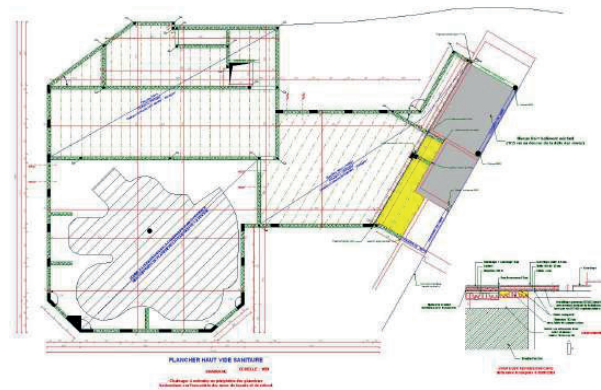
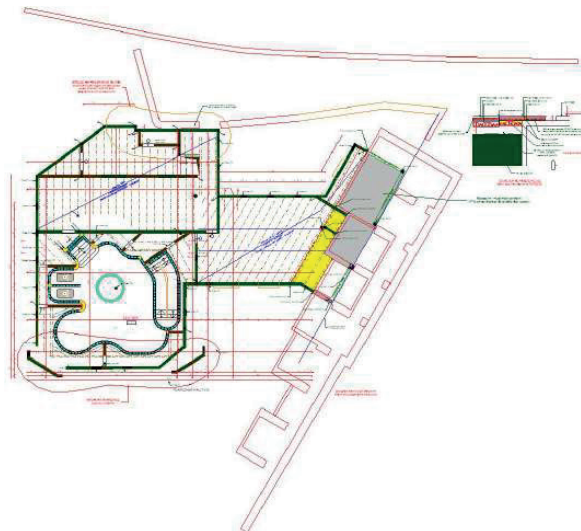
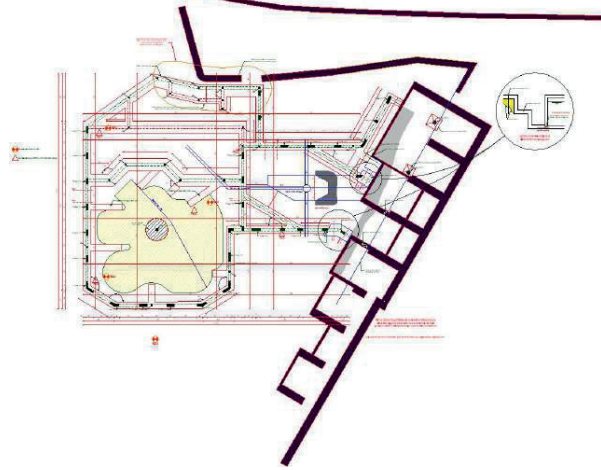


LOGEMENTS & RÉHABILITATIONS (SUITE)

EXTENSION DE LA CLINIQUE CHÂTEAU BERGER À MARSEILLE - CENTRE DE THALASSOTHÉRAPIE 650 M²

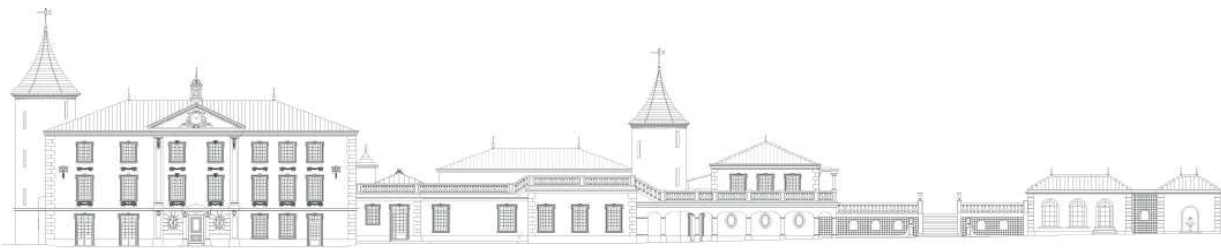
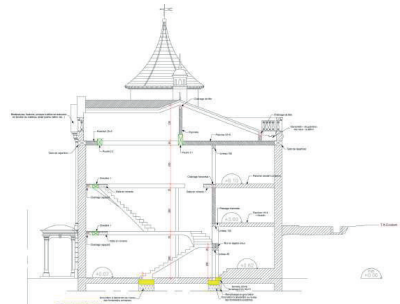
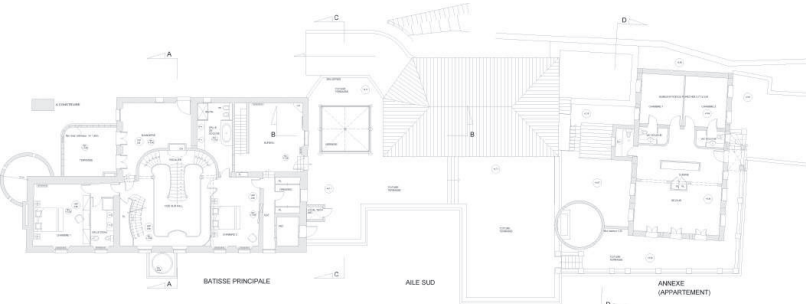
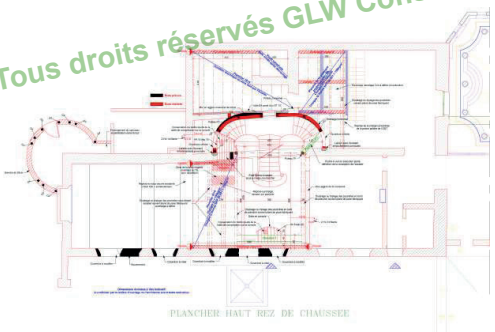
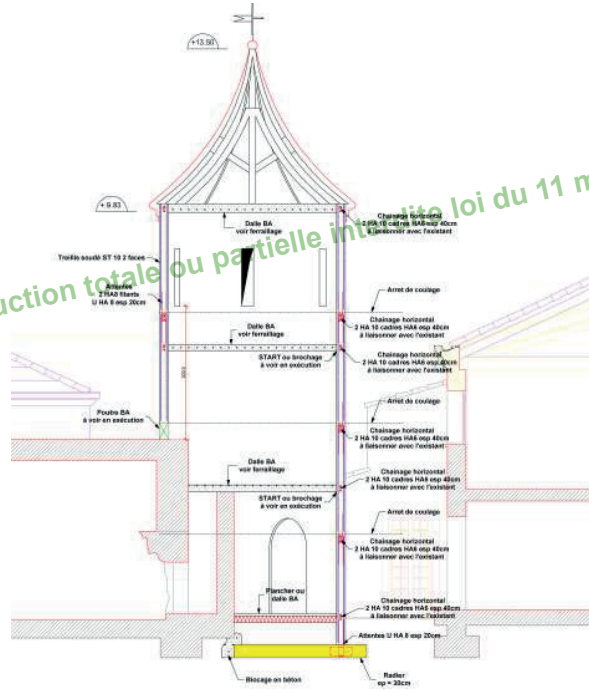
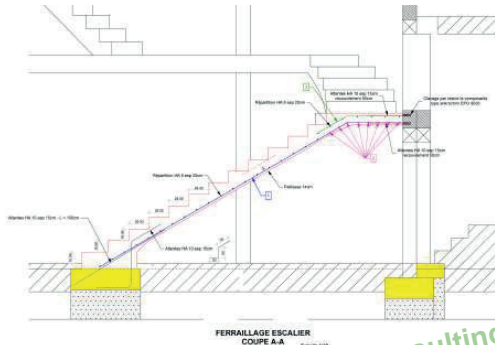
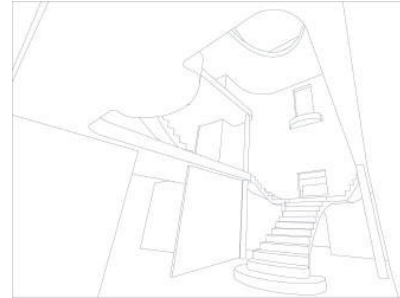
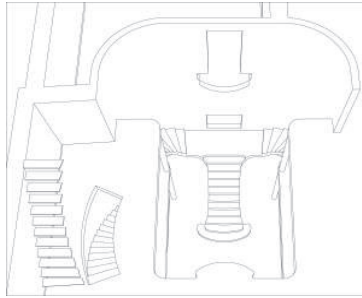
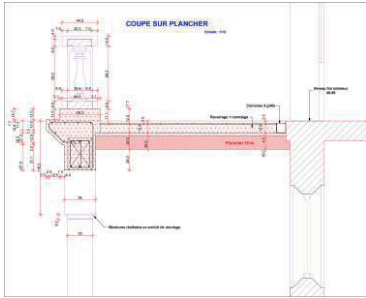


Tous droits réservés GLW Consulting. Reproduction totale ou partielle interdite loi du 11 mars 1957.



LOGEMENTS & RÉHABILITATIONS (SUITE)

DOMAINE LE GRAND BAOU COMMUNE DU VAL

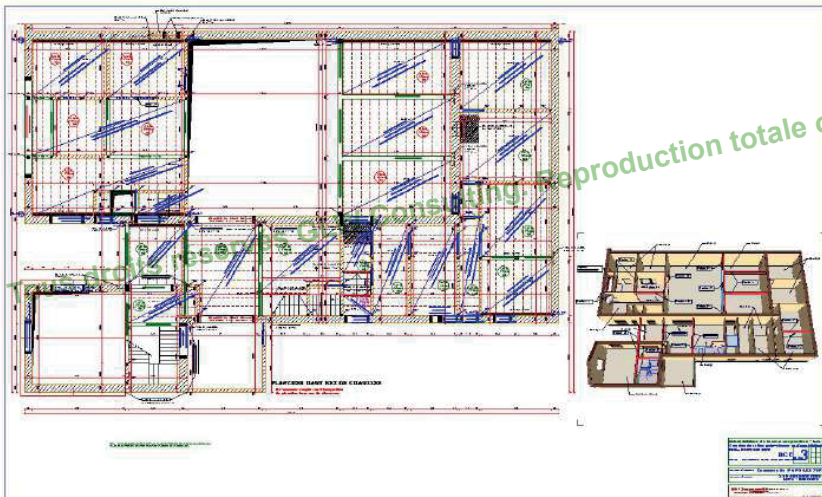
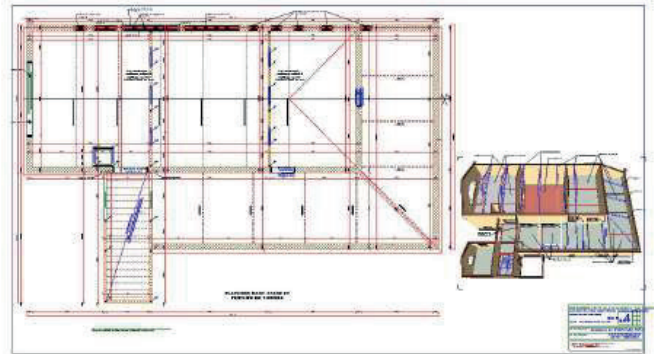
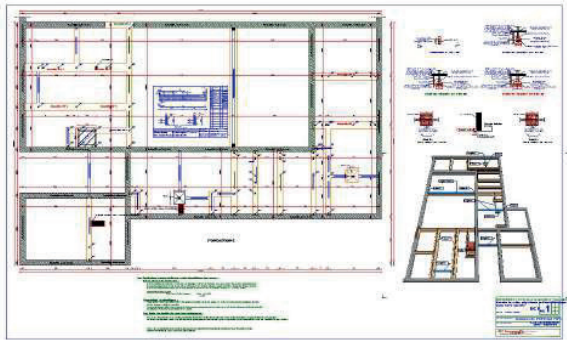


FACADE OUEST

Tous droits réservés GLW Consulting. Reproduction totale ou partielle interdite loi du 11 mars 1957.

LOGEMENTS & RÉHABILITATIONS (SUITE)

LA CAVE COOPÉRATIVE DE NANS LES PINS / SALLES POLYVALENTES ET BIBLIOTHÈQUE

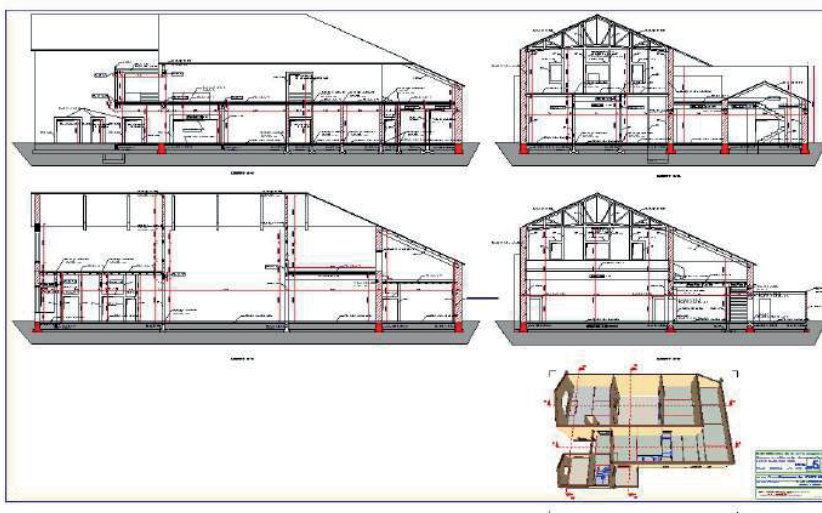


reproduction totale ou partielle interdite loi du 11 mars 1957.

PROFONDITEUR	PROFONDITEUR
1.000	1.000
2.000	2.000
3.000	3.000
4.000	4.000
5.000	5.000
6.000	6.000
7.000	7.000
8.000	8.000
9.000	9.000
10.000	10.000
11.000	11.000
12.000	12.000
13.000	13.000
14.000	14.000
15.000	15.000
16.000	16.000
17.000	17.000
18.000	18.000
19.000	19.000
20.000	20.000
21.000	21.000
22.000	22.000
23.000	23.000
24.000	24.000
25.000	25.000
26.000	26.000
27.000	27.000
28.000	28.000
29.000	29.000
30.000	30.000
31.000	31.000
32.000	32.000
33.000	33.000
34.000	34.000
35.000	35.000
36.000	36.000
37.000	37.000
38.000	38.000
39.000	39.000
40.000	40.000
41.000	41.000
42.000	42.000
43.000	43.000
44.000	44.000
45.000	45.000
46.000	46.000
47.000	47.000
48.000	48.000
49.000	49.000
50.000	50.000

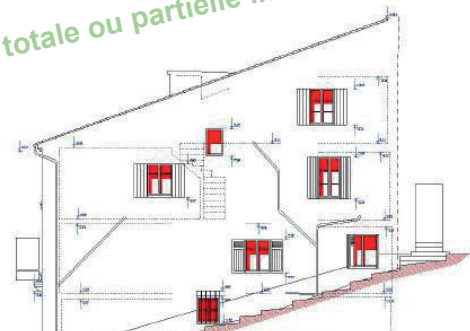
Niveau standard Poutre Longrine : P1 Nombre 1
Nans Longrine Poutre Section 30x140

Page 1/1

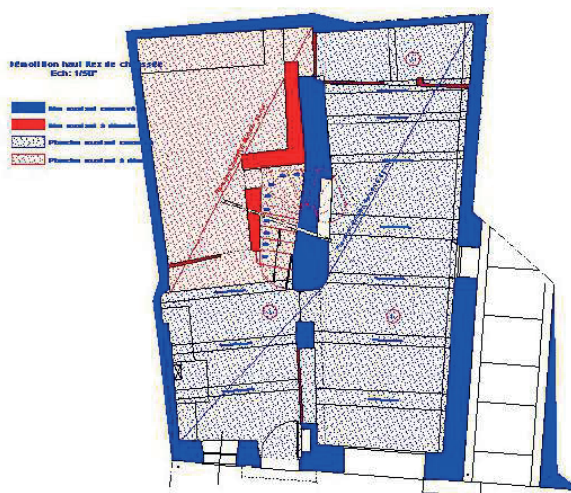
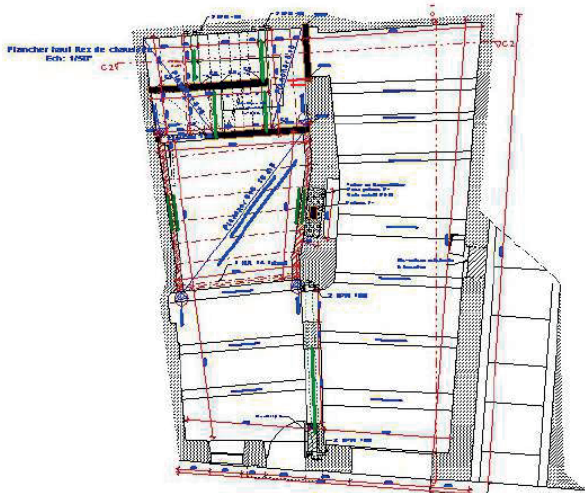


LOGEMENTS & RÉHABILITATIONS (SUITE)

HÔTEL DAUPHIN - CHAMBRES D'ÉTUDIANTS - MAIRIE DE MONTMEYAN

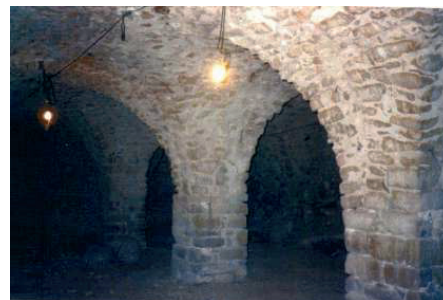
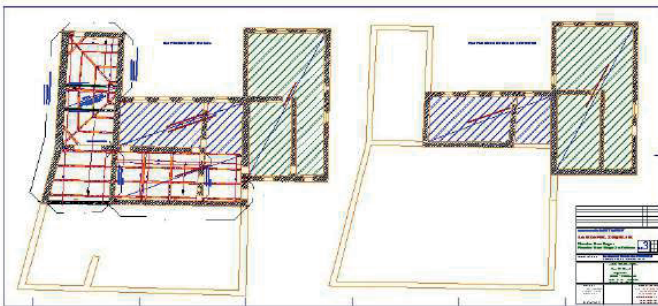


Tous droits réservés GLW Consulting. Reproduction totale ou partielle interdite loi du 11 mars 1957.



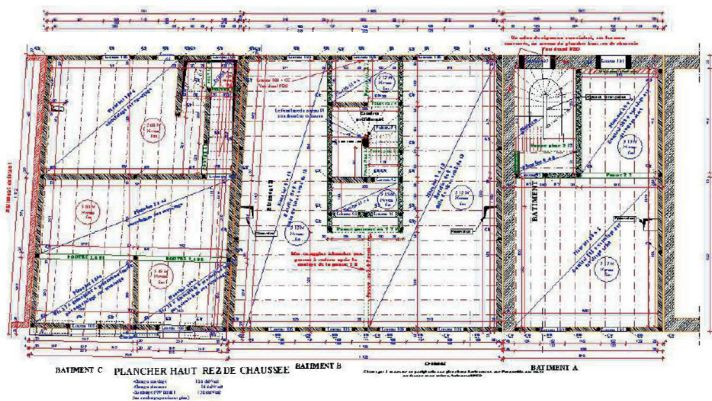
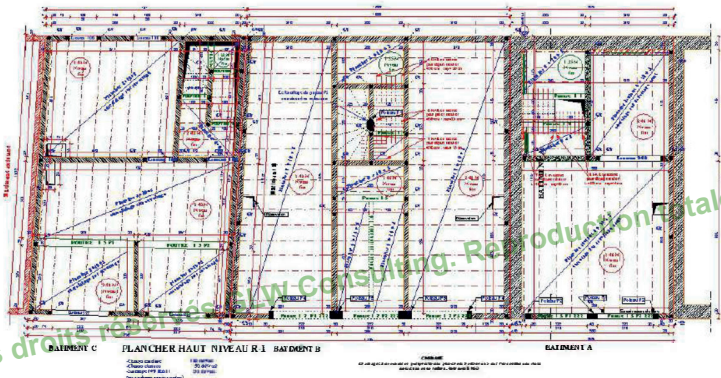
LOGEMENTS & RÉHABILITATIONS (SUITE)

DOMAINE DE LA GRANDE ROQUETTE - COMMUNE DE MONTMEYAN - GÎTES RURAUX 1550 M²



LOGEMENTS & RÉHABILITATIONS (SUITE)

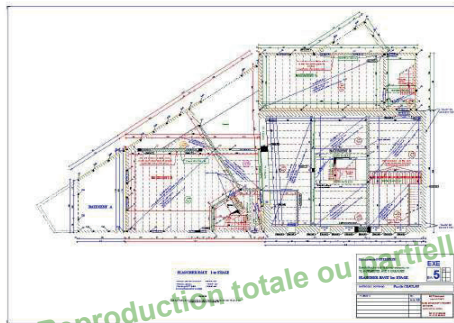
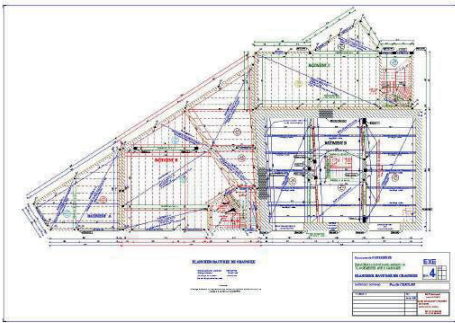
2 LOGEMENTS ET 6 LOGEMENTS NEUFS - SCI LE CLOS - COMMUNE DE FUVEAU



Tous droits réservés GLW Consulting. Reproduction totale ou partielle interdite loi du 11 mars 1957.

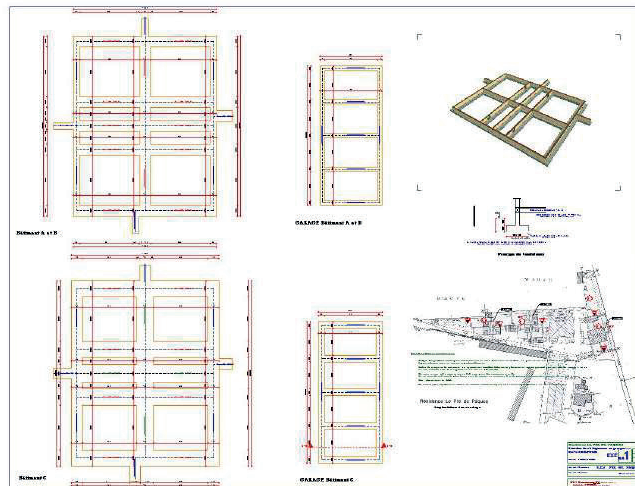
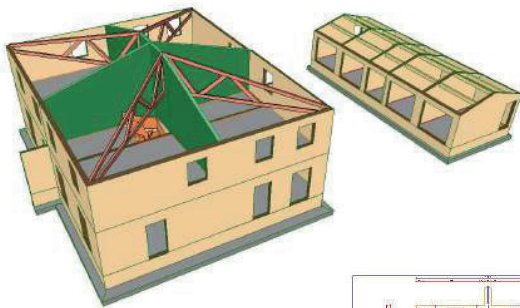
LOGEMENTS & RÉHABILITATIONS (SUITE)

7 LOGEMENTS COMMUNE DE POURIERES - SCI CHAULAN



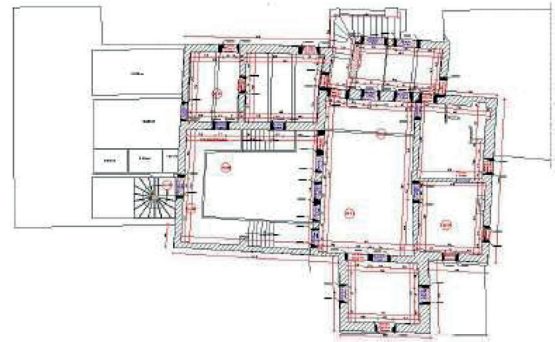
SCIENCE & ARTS
 Tous droits réservés GLW Consulting. Reproduction totale ou partielle interdite loi du 11 mars 1957.

SCI PRÉS DE PÂQUES - 12 LOGEMENTS - COMMUNE DE BRIGNOLES

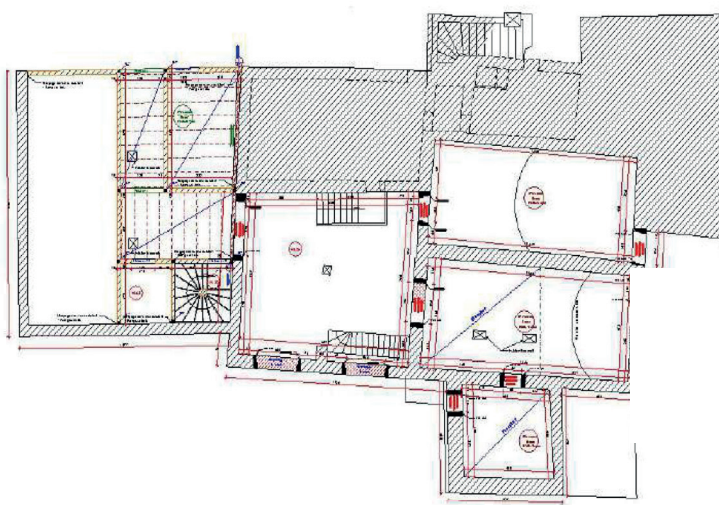


LOGEMENTS & RÉHABILITATIONS (SUITE)

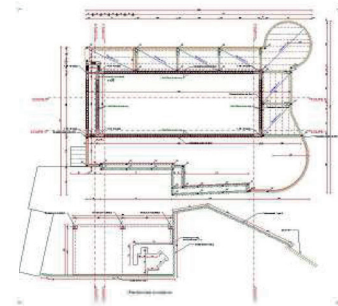
DOMAINE DU PEYROURIER - GÎTES RURAUX 1200 M² - COMPLEXE PISCINE



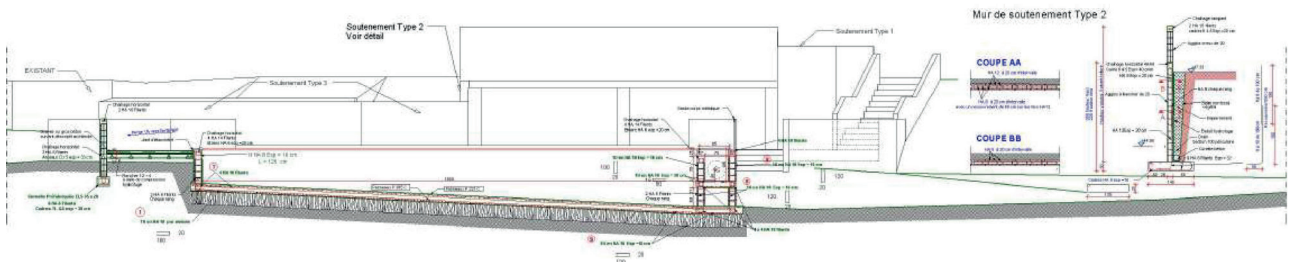
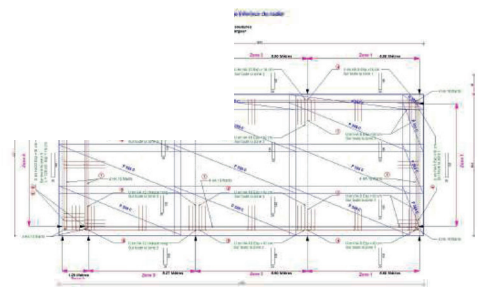
Plancher tout R+1 et principe de la structure



Plancher haut R-1



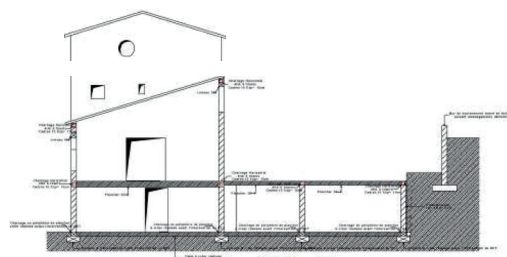
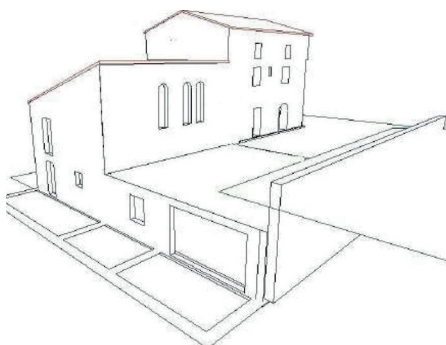
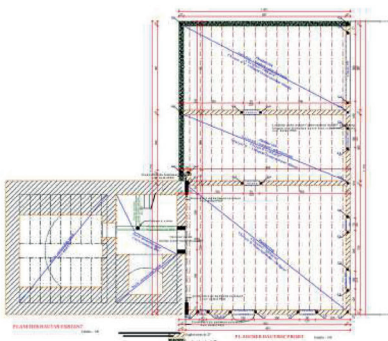
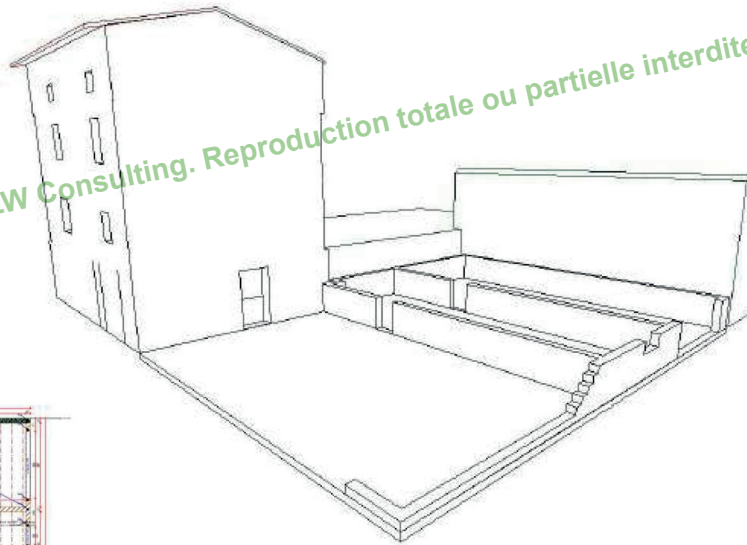
157.



COUPE 5
Coupe longitudinale

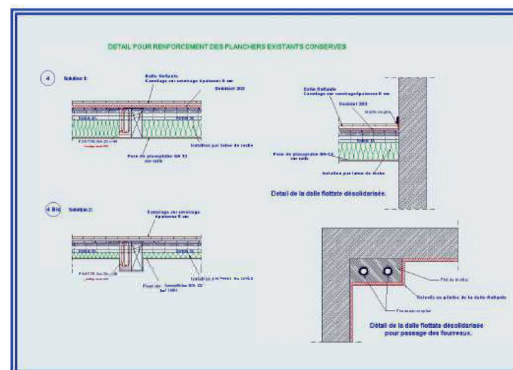
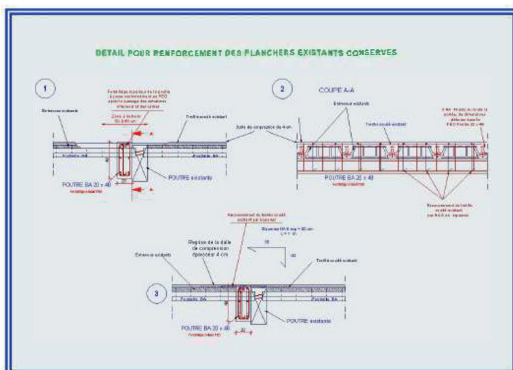
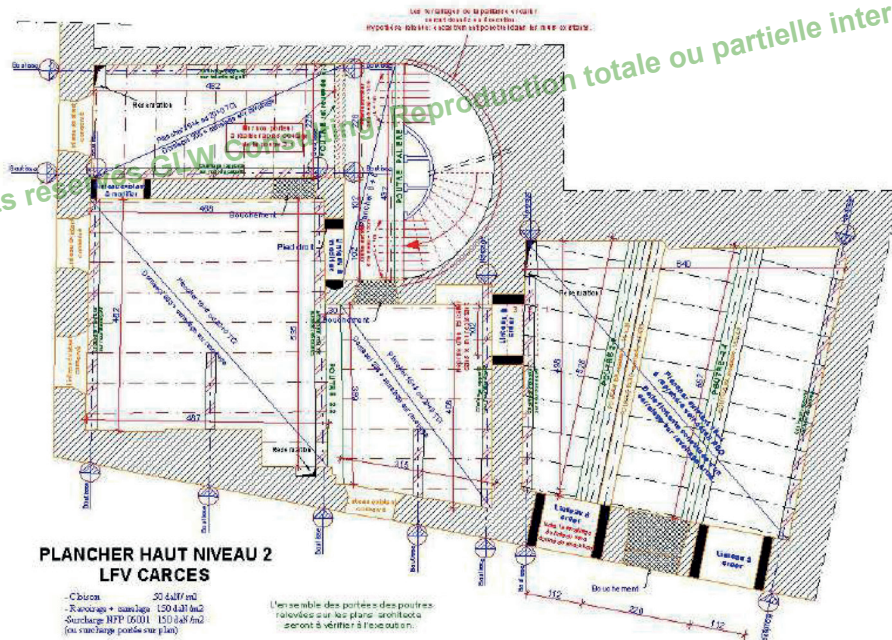
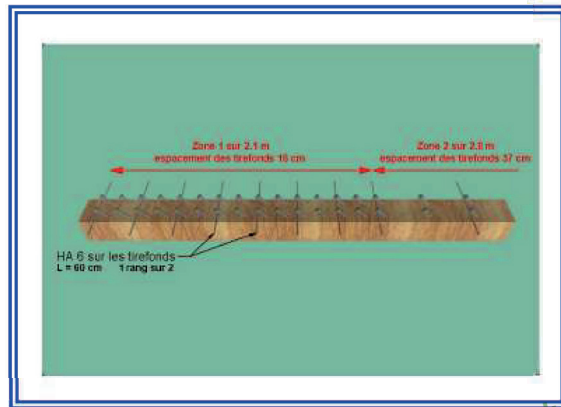
LOGEMENTS & RÉHABILITATIONS (SUITE)

MAISON INDIVIDUELLE - COMMUNE DE ST MARTIN DE PALIÈRE



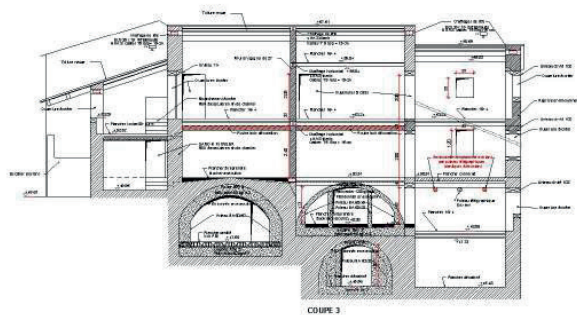
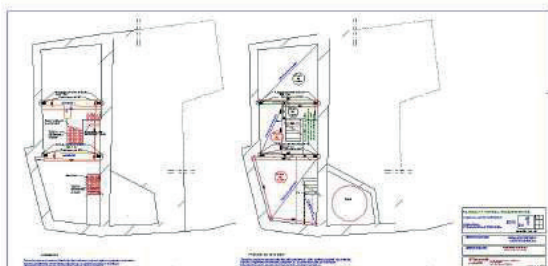
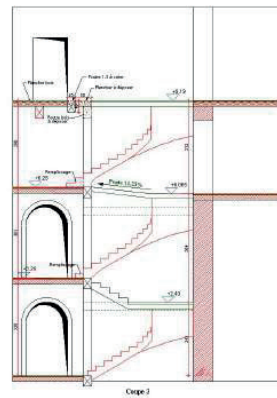
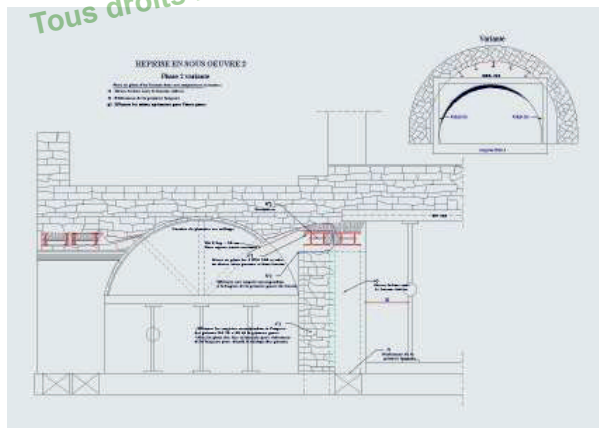
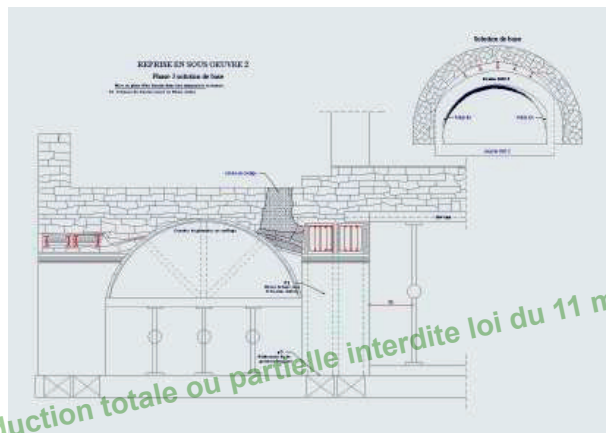
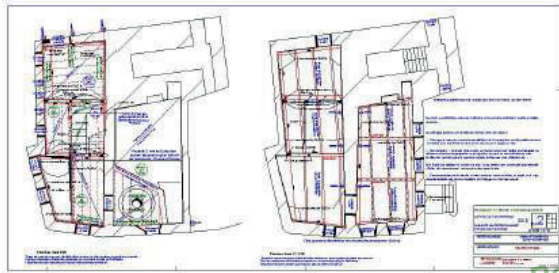
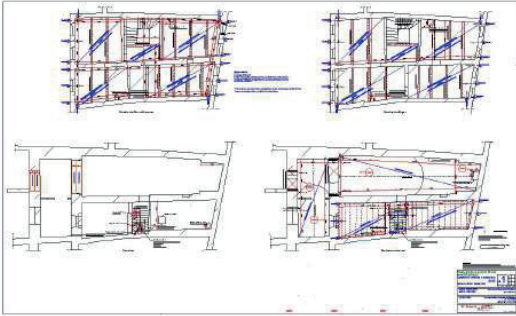
LOGEMENTS & RÉHABILITATIONS (SUITE)

LOGIS FAMILIAL VAROIS - 5 LOGEMENTS - COMMUNE DE CARCÈS



LOGEMENTS & RÉHABILITATIONS (SUITE)

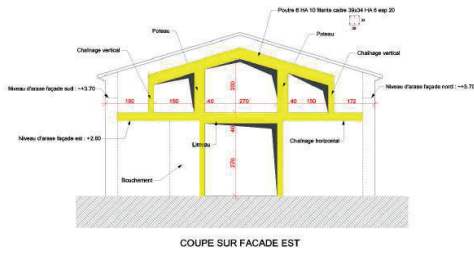
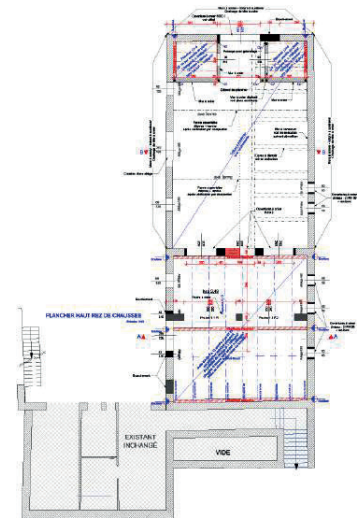
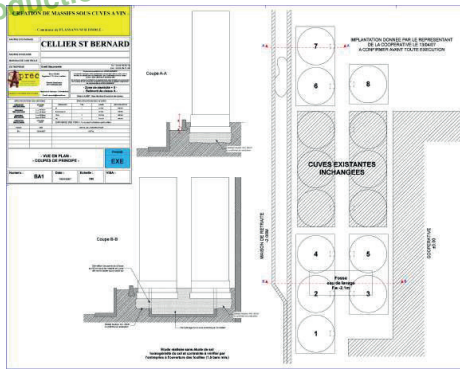
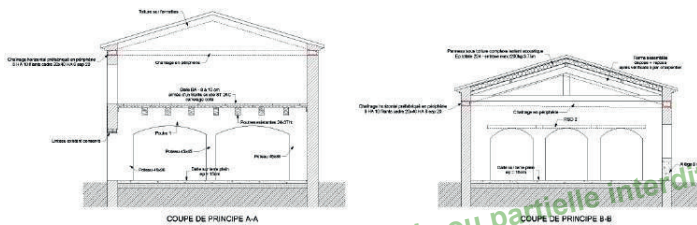
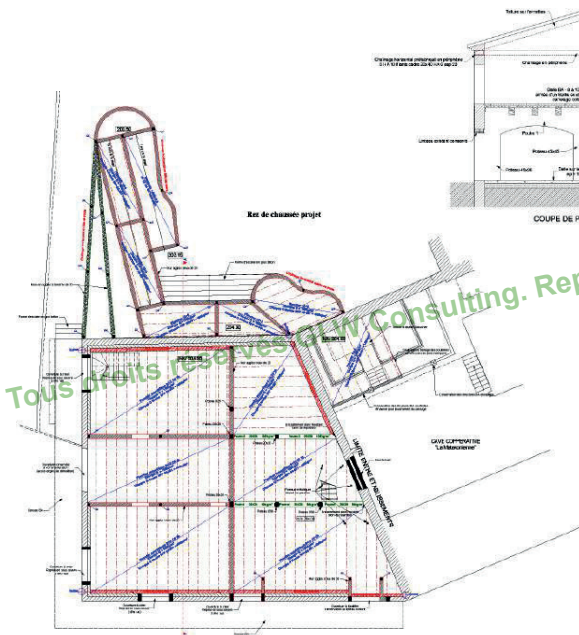
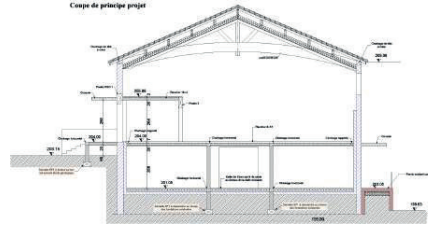
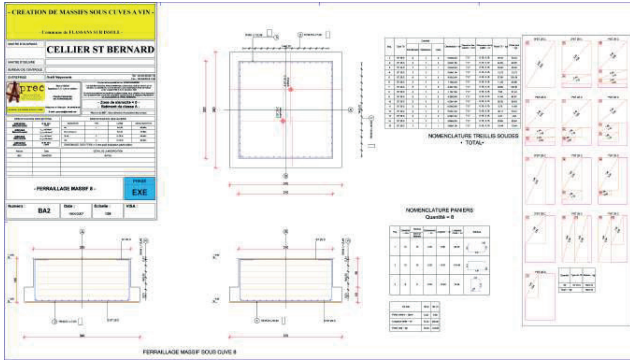
MAIRIE DE FOX-AMPHOUX / MAIRIE DE MÉOUNES



Tous droits réservés GLW Consulting. Reproduction totale ou partielle interdite loi du 11 mars 1957.

LOGEMENTS & RÉHABILITATIONS (SUITE)

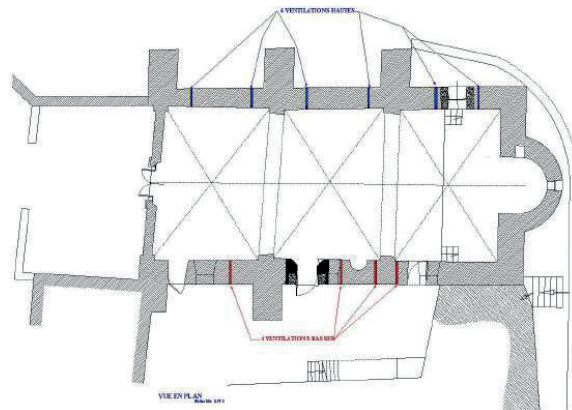
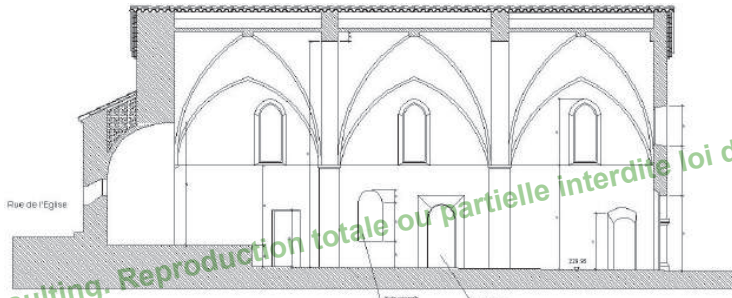
CAVES COOPERATIVES - RÉHABILITATIONS, AGRANDISSEMENTS, REMISES AUX NORMES... CABASSE, FLASSANS, CARCÈS...



Tous droits réservés GLW Consulting. Reproduction totale ou partielle interdite loi du 11 mars 1957.

LOGEMENTS & RÉHABILITATIONS (SUITE)

ÉGLISE NOTRE DAME DES SALLES - PLASTIFICATION DES VOÛTES D'OGIVES - COMMUNE DE Flassans sur Issole



PRINCIPE DE REPRISE DES VOÛTES D'OGIVES à réaliser une pierre sur trois



MODE OPERATOIRE

Travaux à réaliser sur l'ensemble des voûtes

Plâtre-torse détreuvé comprenant par trévaux deux zones de planche

Chargée assemblée et détreuvée comprise formée de l'ancien et du nouveau mortier coulé à l'extérieur des crasses d'origine

Dégraissage des joints de voûte et évacuation de l'air de chaux résiduelle

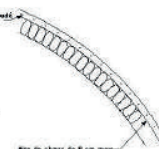
Plâtrage progressif des voûtes et mise en tension par deux et vint des parties adhérentes à la pierre

Continuement par reconstruction d'une nouvelle armature de chaux en chaux et ciment sans aucun pont de chaux sous

Reboullement avec, sachant dans la mesure du possible, de voûtes et évacuation des joints et reconstruction

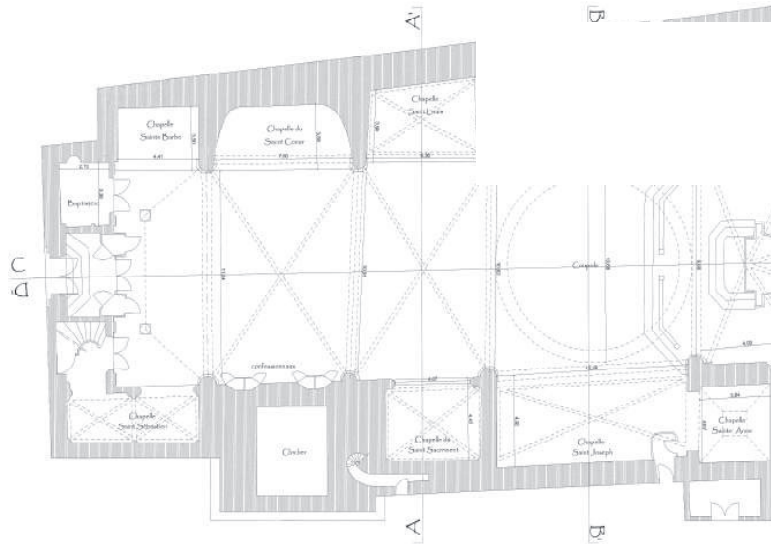
Annexe par feuille jointe

Fig. V



LOGEMENTS & RÉHABILITATIONS (SUITE)

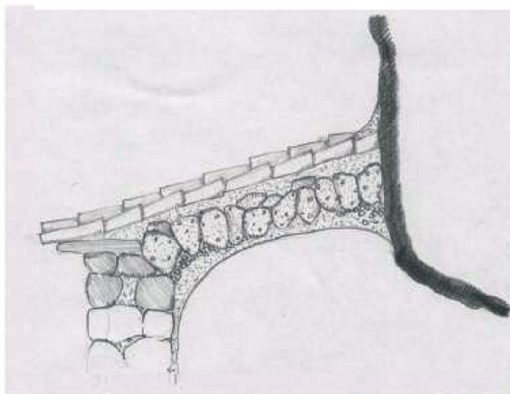
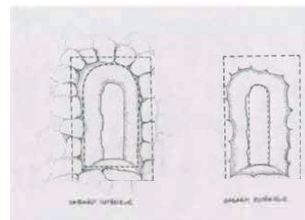
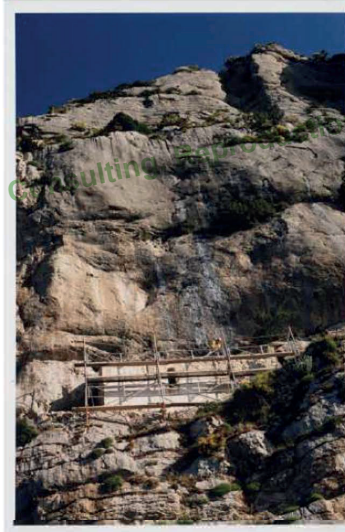
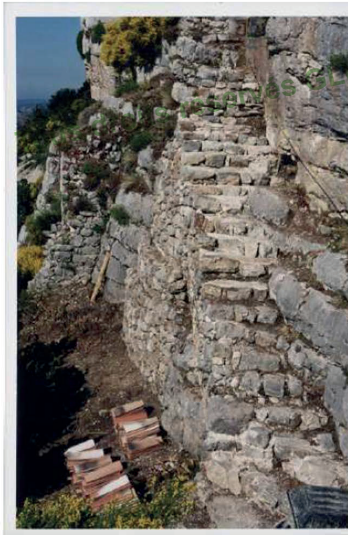
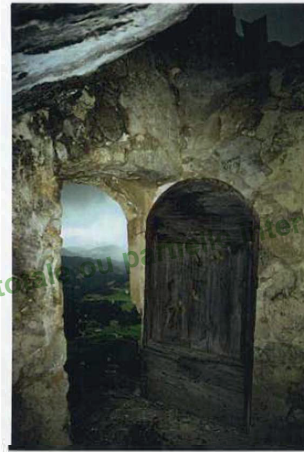
ÉGLISE SAINT SAUVEUR - COMMUNE DE BRIGNOLES



Tous droits réservés GLW Consulting. Reproduction totale ou partielle interdite loi du 11 mars 1957.

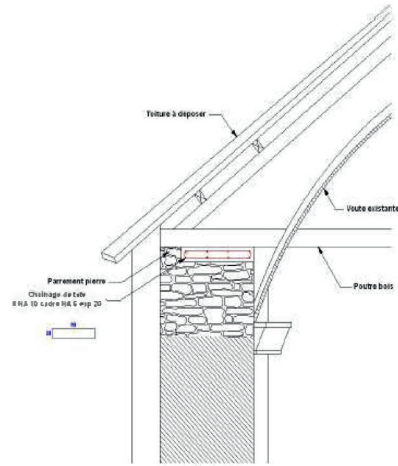
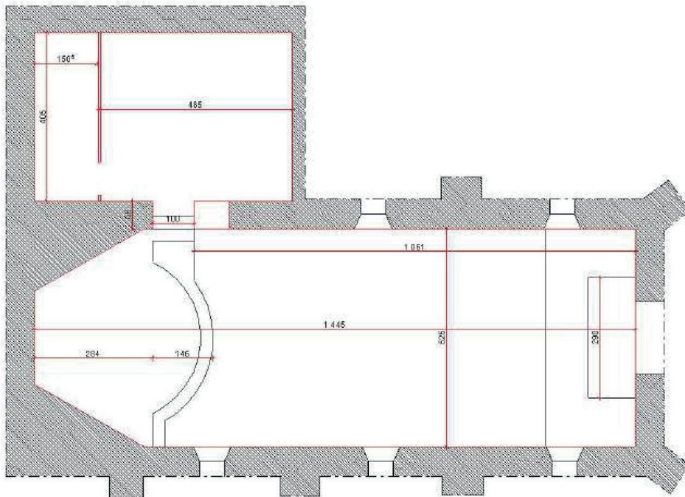
LOGEMENTS & RÉHABILITATIONS (SUITE)

CHAPELLE SAINT TROPHINE - COMMUNE DE ROBION

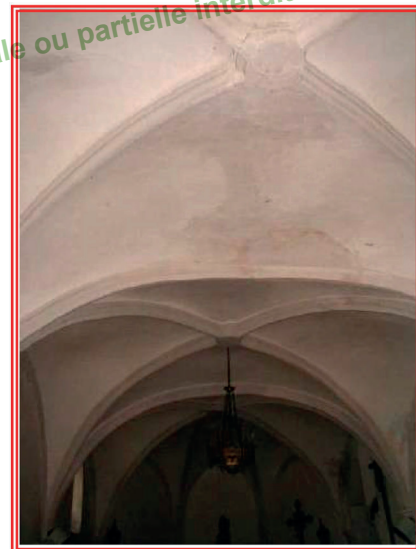


LOGEMENTS & RÉHABILITATIONS (SUITE)

CHAPELLE DE LA MISÉRICORDE - COMMUNE DE NANS LES PINS

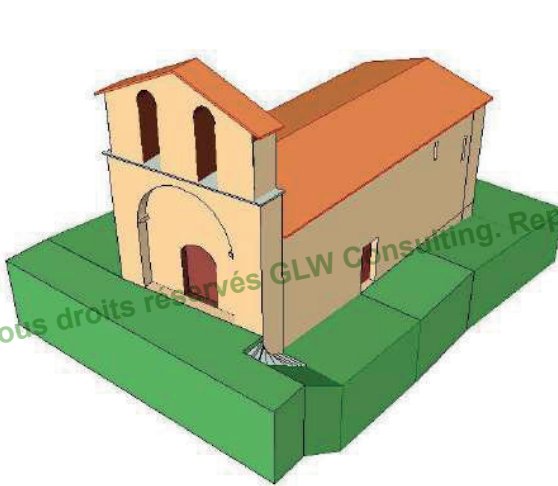


PRINCIPE DE POSE DU CHÂINAGE DE TÊTE

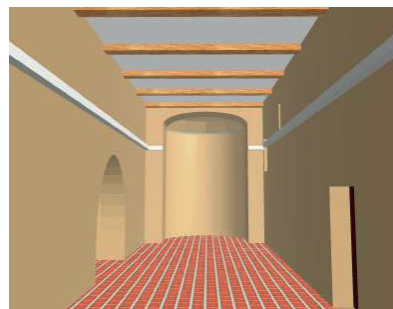
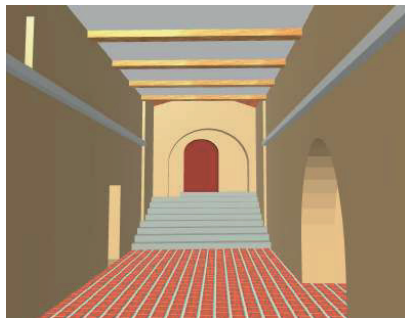


LOGEMENTS & RÉHABILITATIONS (SUITE)

CHAPELLE NOTRE DAME - COMMUNE DE MOISSAC BELLEVUE



Tous droits réservés GLW Consulting. Reproduction totale ou partielle interdite loi du 11 mars 1957.



LOGEMENTS & RÉHABILITATIONS (SUITE)

CHAPELLE NOTRE DAME DE BUYEI MUSÉE DES ARTS ET TRADITIONS - COMMUNE DE GUILAUMES
RENÉ DINKEL CONSERVATEUR DES MONUMENTS HISTORIQUES



Relevé des Fissures

